



Construction Industry Advisory Committee (CONIAC)
Supporting Small Employers Working Group

SSE FOCUS 2022-2024



Construction Industry Advisory Committee (CONIAC)
Supporting Small Employers Working Group

SSE focus 2022-2024

- To provide tools, guidance and support to small businesses
- Influencing small employers and occasional clients
- Focusing on the difficult-to-reach parts of the industry
- Retrofit work associated with achieving Net Zero Carbon
- Working with trade and professional bodies
- Supporting the CLC and its workstreams
- Reaching those in the industry never engaged before



Construction Industry Advisory Committee (CONIAC)
Supporting Small Employers Working Group

SSE focus 2022-2024

Published Projects

Asbestos Risk

Helpful advice for tradespeople and anyone working in retrofitting, maintenance and improvement.

Are you a tradesperson?



Scan here to access guidance and advice from HSE

Asbestos - am I at risk?

To find out if your work puts you at risk of asbestos, visit: <https://www.hse.gov.uk/asbestos/risk.htm>

Where can you find asbestos in a residential property?

ASBESTOS
WHERE IT HIDES



Inside

- A. [Asbestos cement](#) Water tank
- B. [Pipe lagging](#)
- C. [Loose fill](#) Insulation
- D. [Textured decorative coating](#), eg artex
- E. [AIB](#) ceiling tiles
- F. [AIB](#) bath panel
- G. [Toilet seat and cistern](#)
- H. [AIB](#) behind fuse box
- I. [AIB](#) airing cupboard and/or sprayed insulation coating boiler
- J. [AIB](#) partition wall

- K. [AIB](#) interior window panel
- L. [AIB](#) around boiler
- M. [Vinyl floor tiles](#)
- N. [AIB](#) behind fire

Outside

- O. Gutters and [Asbestos cement](#) downpipes
- P. Soffits – [AIB](#) or [asbestos cement](#)
- Q. [AIB](#) exterior window panel
- R. [Asbestos cement](#) roof
- S. [Asbestos cement](#) panels
- T. [Roofing felt](#)

Where can you find asbestos in an industrial or commercial property?

ASBESTOS
WHERE IT HIDES



Inside

- 1. [Sprayed coatings](#) on ceilings, walls, beams and columns
- 2. [Asbestos cement](#) water tank
- 3. [Loose fill insulation](#)
- 4. [Lagging](#) on boilers and pipes
- 5. [AIB](#) ceiling tiles
- 6. [Toilet seat and cistern](#)
- 7. [AIB](#) partition walls
- 8. [AIB](#) panels in fire doors
- 9. Asbestos rope seals, gaskets and paper
- 10. [Vinyl floor tiles](#)
- 11. [AIB](#) around boilers

- 12. [Textiles](#) eg fire blankets
- 13. [Textured decorative coatings](#) on walls and ceilings eg artex

Outside

- 14. [Asbestos cement](#) roof
- 15. [Asbestos cement](#) panels
- 16. [Asbestos cement](#) gutters and downpipes
- 17. Soffits – [AIB](#) or [asbestos cement](#)
- 18. [Asbestos cement](#) flue

AIB = Asbestos Insulating Board

HSE Asbestos Essentials Guidance links:
[hse.gov.uk/asbestos/essentials](https://www.hse.gov.uk/asbestos/essentials)

PPE (including RPE) - Check its right!:
[hse.gov.uk/pubns/guidance/em6.pdf](https://www.hse.gov.uk/pubns/guidance/em6.pdf)



Construction Industry Advisory Committee (CONIAC)

Supporting Small Employers Working Group

Giving SMEs simple advice so that they know what they have to do

#HelpGBWorkWell

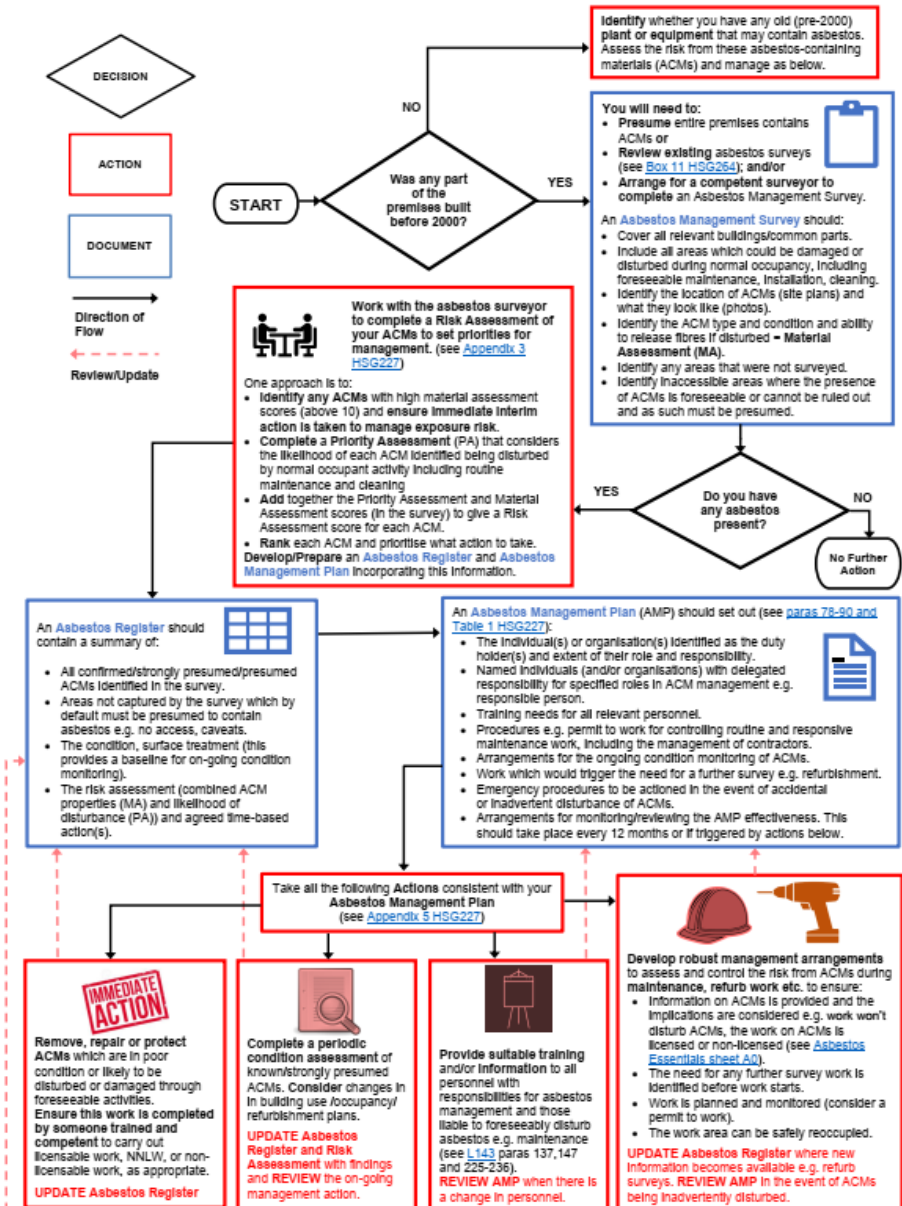
Consider undertaking appropriate asbestos related training dependent on the work you do (awareness, non-licensable work and licensable work)



Construction Industry Advisory Committee (CONIAC)
Supporting Small Employers Working Group

Asbestos – am I at Risk Infographic

Asbestos: Duty to Manage Flow Chart



Construction Industry Advisory Committee (CONIAC)
Supporting Small Employers Working Group

Asbestos – Duty to Manage Flowchart

CDM Case Studies for Small Builders and Contractors

Handy examples of the application of the Construction (Design and Management) Regulations 2015 to three small to medium building projects in the domestic sector.

What are CDM regulations and do they apply to my business?

The Construction (Design & Management) Regulations (CDM 2015) are the main set of regulations for managing the health, safety and welfare of construction projects. CDM applies to all building and construction work and includes new build, demolition, refurbishment, extensions, conversions, repair and maintenance.

Source: CITB

Contents

1. Flowchart: How CDM 2015 applies in the domestic sector
2. Summary of Key Changes in CDM 2015
3. Case Studies:
 - o Small Domestic – ‘The Sunbury Extension’ (1A)
 - o Small Domestic – ‘The Bishops Stortford Extension’ (1B)
 - o Medium Domestic – ‘The Chelsea Mews Refurbishment’ (2)
4. Frequently Asked Questions (FAQs) and Appendix



CITB CDM Wizard

Download the CITB CDM Wizard app, to help you plan and organise your construction job, and make sure that the work is carried out without risks to health and safety.



Construction Phase Plan

Download the HSE's one-page template for the Construction Phase Plan.



HSE L153

L153 Managing health and safety in construction. Construction (Design and Management) Regulations 2015. Guidance on Regulations (2015).



This document is an amended and abridged version of the 'CDM 20-20 Vision – Changing the Culture' report published by the Keeping Pace with Change (KPWC) group of the Construction Industry Advisory Committee (CONIAC). It has been compiled by the Supporting Small Employers (SSE) group of CONIAC.

Interested readers can access the full report here:
<https://www.cdmdifferently.com/resources>

Version 1 (July 2022). Contains public sector information published by the Health and Safety Executive and licensed under the Open Government Licence (OGL). [Click here to access further information about the OGL.](#)



Construction Industry Advisory Committee (CONIAC)
Supporting Small Employers Working Group

CDM Case Studies for Small Builders and Contractors

Repair, Maintenance and Home Improvement

Helpful advice for identifying and managing risk when undertaking low carbon home improvements

Useful tools for tradespeople involved in Repair, Maintenance & Home Improvement

All QR codes in this infographic can be clicked



Click each work type to see risks



HSE App

Designed to help organisations understand the law, their health and safety rights, and their responsibilities. Primarily for SMEs to help them better understand what is required to protect employees.



CITB CDM Wizard App

Helps you to plan and organise your construction job, and work together with others involved to make sure that the work is carried out without risks to health and safety.



This guidance has been produced by the Supporting Small Employers group of the Construction Industry Advisory Committee. Graphics reproduced by kind permission of the Health and Safety Executive. The links provided were functional and accurate at time of publishing (November 2023). Contains public sector information published by the Health and Safety Executive and licensed under the Open Government Licence. <https://www.ogc.gov.uk/>



Construction Industry Advisory Committee (CONIAC)

Supporting Small Employers Working Group

Giving SMEs simple advice so that they know what they have to do

#Help@WorkWell

Repair, Maintenance and Home Improvement

Helpful advice for identifying and managing risk when undertaking low carbon home improvements

Useful tools for tradespeople involved in Repair, Maintenance & Home Improvement

All QR codes in this infographic can be clicked



Click each work type to see risks



HSE App

Designed to help organisations understand the law, their health and safety rights, and their responsibilities. Primarily for SMEs to help them better understand what is required to protect employees.



CITB CDM Wizard App

Helps you to plan and organise your construction job, and work together with others involved to make sure that the work is carried out without risks to health and safety.



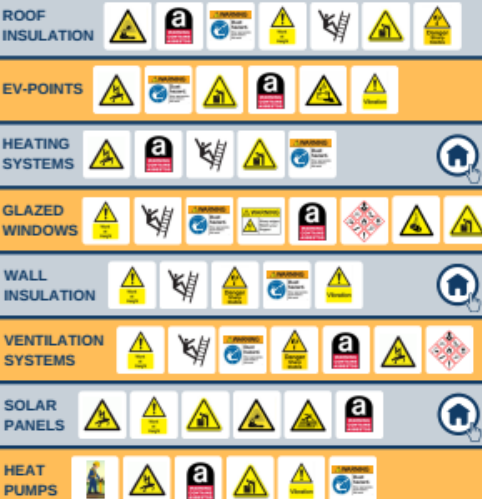
This guidance has been produced by the Supporting Small Employers group of the Construction Industry Advisory Committee. Graphics reproduced by kind permission of the Health and Safety Executive. The links provided were functional and accurate at time of publishing (November 2023). Contains public sector information published by the Health and Safety Executive and licensed under the Open Government Licence. <https://www.ogc.gov.uk/>



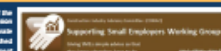
Repair, Maintenance and Home Improvement

Helpful advice for identifying and managing risk when undertaking low carbon home improvements

Click each risk warning sign below to visit relevant guidance



This guidance has been produced by the Supporting Small Employers group of the Construction Industry Advisory Committee. Graphics reproduced by kind permission of the Health and Safety Executive. The links provided were functional and accurate at time of publishing (November 2023). Contains public sector information published by the Health and Safety Executive and licensed under the Open Government Licence. <https://www.ogc.gov.uk/>



Construction Industry Advisory Committee (CONIAC)
Supporting Small Employers Working Group

Repair, Maintenance and Home Improvement Infographic



Construction Industry Advisory Committee (CONIAC)
Supporting Small Employers Working Group

WHEN YOU ARE THE REASON



FOR THE COMPANY SAFETY VIDEO

FED UP BEING THE FOOL



ON THE TOOLS?

**Helpful advice and handy resources on
managing risk at work**



GDM Case studies



Asbestos - Duty to Manage



Repair, Maintenance &
Home Improvement



Asbestos - Am I at Risk?

For people like you. From people like you.



**Promoting SSE &
CONIAC Website**



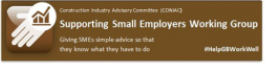
Construction Industry Advisory Committee (CONIAC)
Supporting Small Employers Working Group

Date	Name	Type	Total Scan	QR Code	Action
<input type="checkbox"/> 14-Nov-2023 16:56 Created on: 11-Jul-2023 10:19 Status: Active ?	CONIAC SEE Asbestos ✎ qrcc.me/rxmjf8u6vdvu CONIAC SSE	Dynamic URL	108 View Details		Download Decorate Edit Share Move to folder
<input type="checkbox"/> 14-Nov-2023 17:04 Created on: 11-Jul-2023 10:34 Status: Active ?	CONIAC SEE Asbestos DTM ✎ qrcc.me/rxml9vk3krwu CONIAC SSE	Dynamic URL	62 View Details		Download Decorate Edit Share Move to folder
<input type="checkbox"/> 14-Nov-2023 17:04 Created on: 11-Jul-2023 10:42 Status: Active ?	CONIAC SSE CDM Case studies ✎ qrcc.me/rxmlmsfv4ok CONIAC SSE	Dynamic URL	67 View Details		Download Decorate Edit Share Move to folder
<input type="checkbox"/> 14-Nov-2023 17:06 Created on: 14-Nov-2023 16:39 Status: Active ?	CONIAC SSE Repair, Maintenance and Home Improvement ✎ qrcc.me/s44gxz0wgijm CONIAC SSE	Dynamic URL	70 View Details		Download Decorate Edit Share Move to folder
<input type="checkbox"/> 14-Nov-2023 17:06 Created on: 11-Jul-2023 10:37 Status: Active ?	CONIAC SSE Page ✎ qrcc.me/rxmls23g0x CONIAC SSE	Dynamic URL	76 View Details		Download Decorate Edit Share Move to folder

Helpful advice and handy resources on managing risk at work



For people like you. From people like you.



383 Total Scans



Construction Industry Advisory Committee (CONIAC)
Supporting Small Employers Working Group

SSE focus 2022-2024

Current Projects



- **Welfare Infographic**
- **Climate Change & Risk Infographic**
- **Stress & Mental Health / Wellbeing**



Construction Industry Advisory Committee (CONIAC)
Supporting Small Employers Working Group

THANK YOU